

Using the Portable Hearing Induction Loop

A creative accessibility guide by Turf Projects



What is an Induction Loop?

A hearing induction loop is a special type of sound system designed to help people who wear hearing aids.

Imagine you're in a busy, noisy environment like a train station or a theatre.

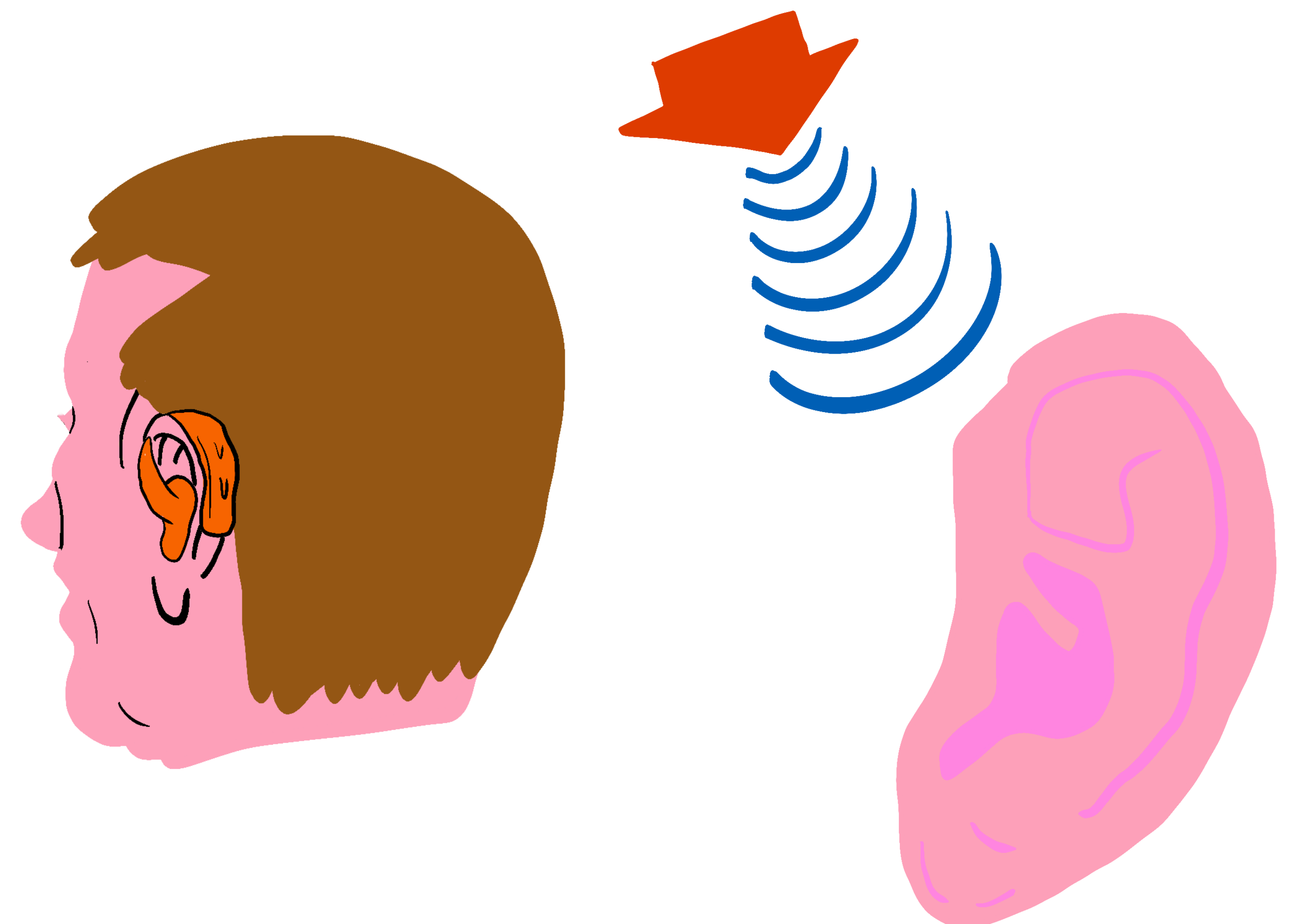
If you're someone who uses a hearing aid, it can be tough to pick out the sounds you want to hear - like the dialogue in a play - from all the background noise. That's where an induction loop comes in.

First, a wire loop is installed around the perimeter of the area, like a train station waiting area or a theatre.

When sounds are produced - like someone speaking into a microphone - the sound system converts these sounds into an electric current that travels around the wire loop.

If you're in this area and you have a hearing aid equipped with a telecoil (a small coil of wire), this magnetic field induces a current in the telecoil, which is then converted back into sound by your hearing aid, making the sound a lot cleaner and clearer, because it doesn't have to travel through the air and compete with all the background noise.

That's why induction loops can be a big help for people with hearing aids in public places.

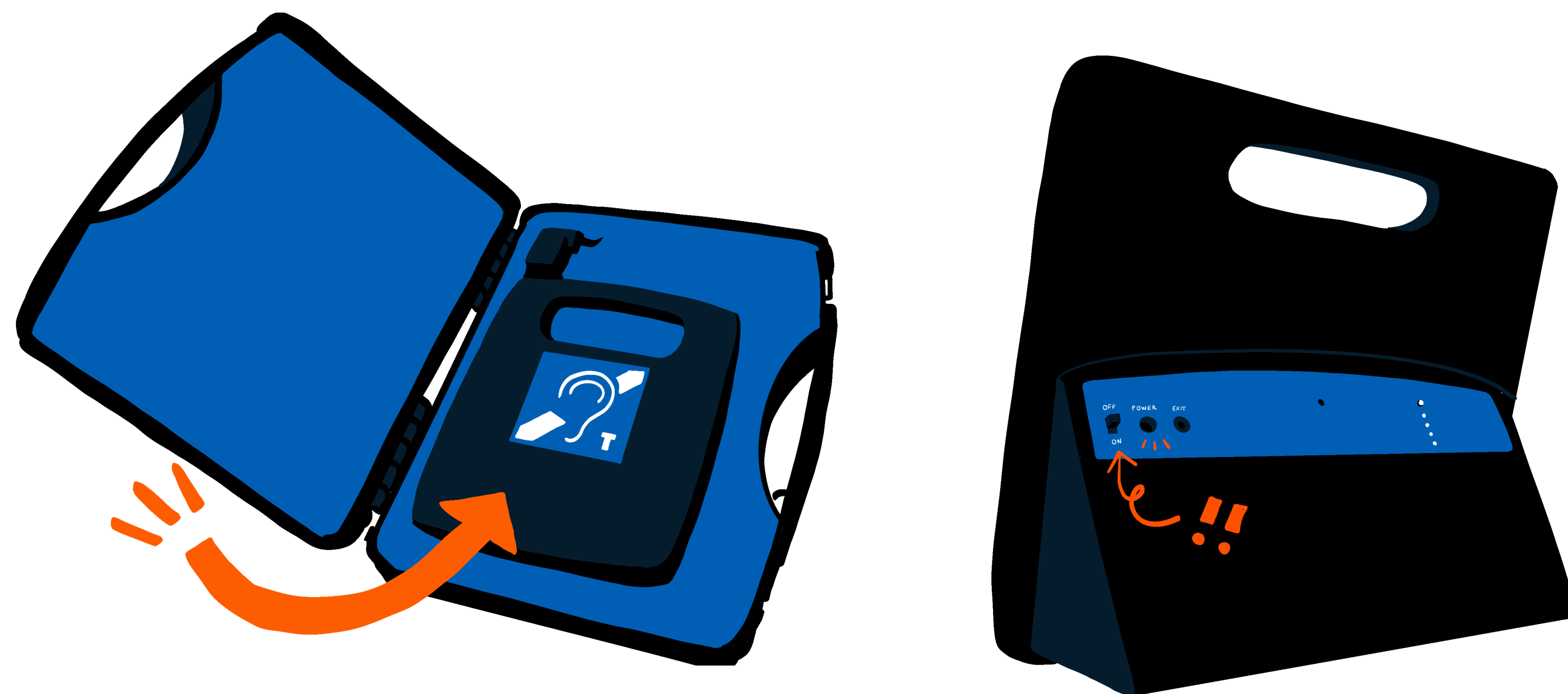


Quick guide to using the induction loop

1. Make sure the portable induction loop is charged or can be plugged into the charger. This should be checked by the Access Lead AT LEAST once per month.



2. Switch it on using the 'On/Off' button:

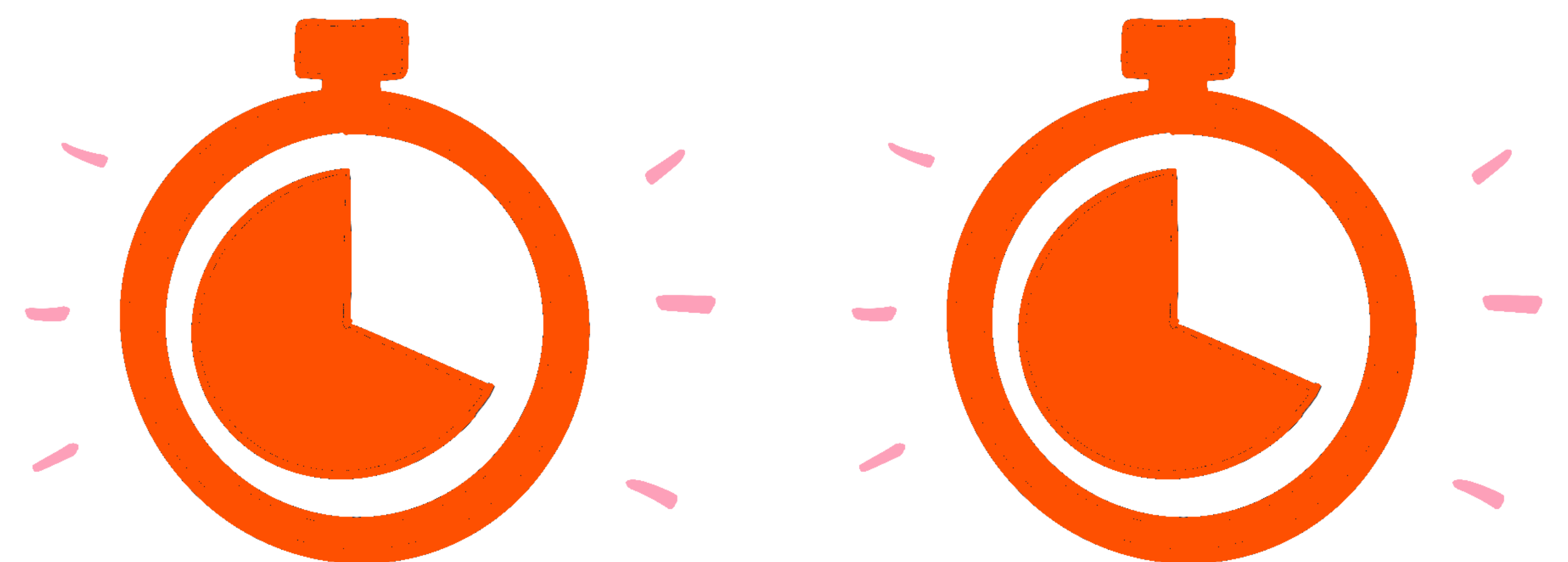


Press once if you want it to stay on for 10 minutes.
(Number 1 light will flash)

Press and hold until number 2 light flashes on for this
to stay on for 30 minutes.

Press and hold until number 3 light flashes on for this
to stay on for 60 minutes.

3. Timed settings give a short beep, followed by a few
beeps before it turns off.



How it works in different spaces:

Space tested	Maximum Range	Notes/ Tips to bear in mind
Workshop space (back)	3m	This is tested with the speaker's distance from induction loop - it's a shorter distance of working if the speaker stays with the loop and moves with it further away from the listener needing access.
Workshop space (front)	6m	Worked well if sat around large tables at furthest points from each other.
Project/ Exhibition Space	8m approx	Be mindful of echoey ness and low level but was audible from furthest corners of the space.
Studios Lower floor	All within range of each studio space at furthest points.	Toilet fan timer JS/volunteer to check - be aware this affects quality of noise when on.



Space tested	Maximum Range	Notes/ Tips to bear in mind
Studios Ground Floor	All within range of each studio space at furthest points.	
Studios Loft Space	All within range of each studio space at furthest points.	Just wasn't so clear from one side of the middle wall. (still audible but might need to project voice more)
DFSL Print Collective	All within range of each studio space at furthest points.	Just make sure the loop microphone side is facing the speaker.
Inside Whitgift Shopping Centre	Not really within range of any space without significant interference of background noise.	Tried near escalator, near Turf Projects' main window and Whitgift info point.
Outdoors	Not really within range of any space without significant interference of background noise but could work in quiet area of a park.	Tried Whitgift entrances near McDonalds and Sainsbury's car park.



About Turf

Founded in 2013 by Croydon locals, Turf Projects is Croydon's homegrown artist space and the first entirely artist-run contemporary art space in the borough.

A registered charity based in Croydon's Whitgift Shopping Centre, we put on free exhibitions, workshops, facilitate local artist collectives & run artist studios.

We try to make sure that everything we do is as accessible as possible to as many people as possible.

For more info or to get involved, visit turf-projects.com or email us at info@turf-projects.com



@turfprojects



@turfprojects