



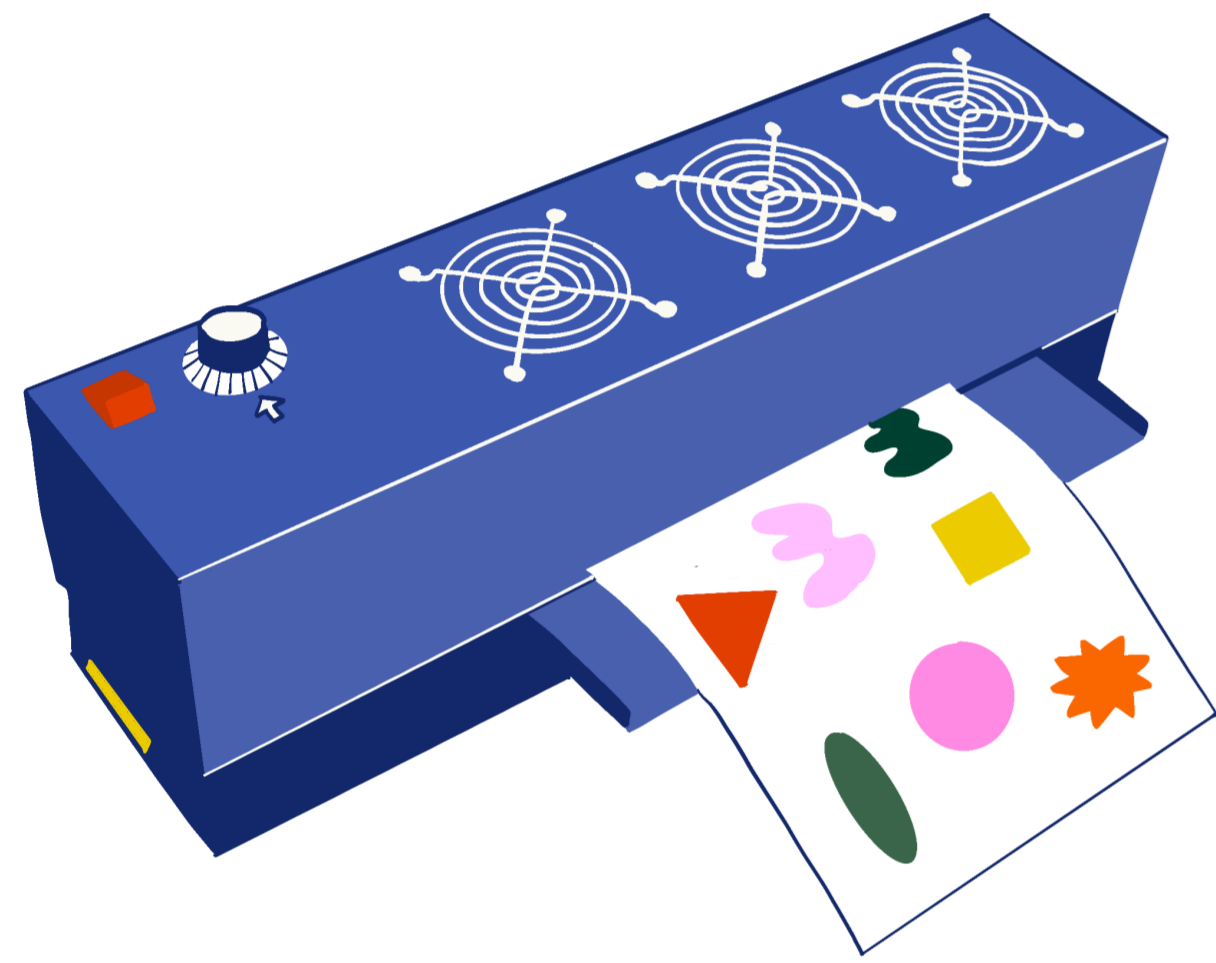
Guide to using the Swell Ink machine

A creative accessibility guide by Turf Projects

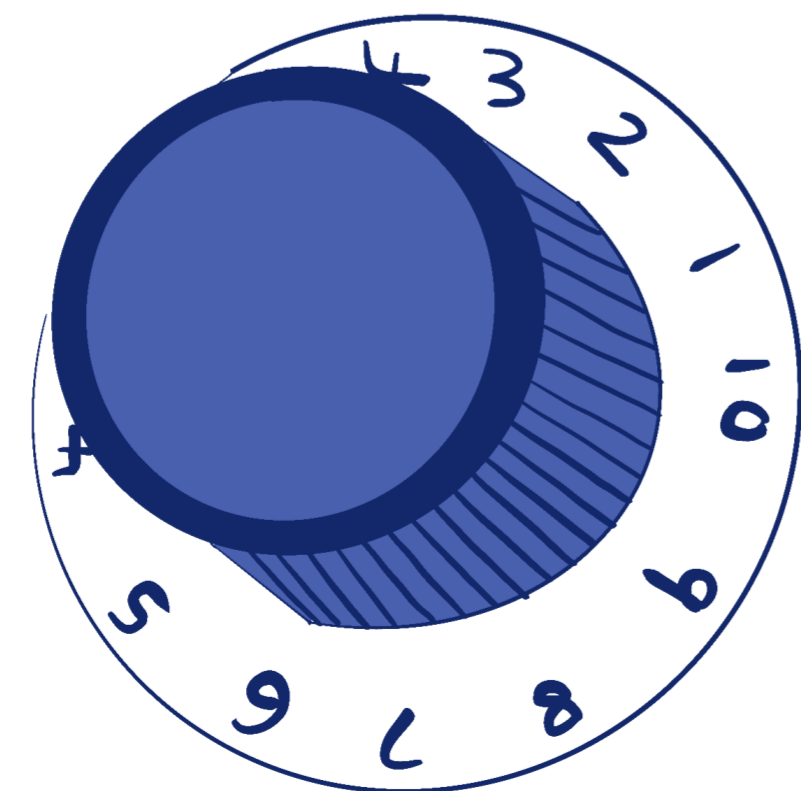
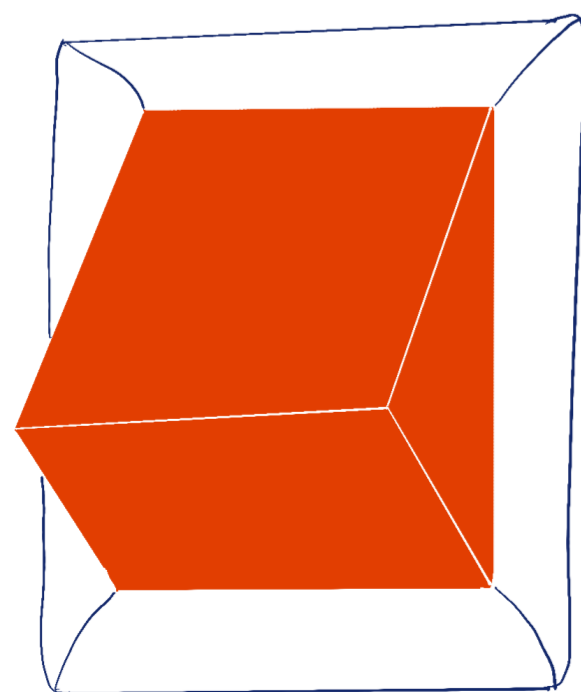


Guide to using the Swell Ink Machine

1. Take the machine out of its box and place it on a stable table top. Add the tray from the box to the machine to catch the paper.

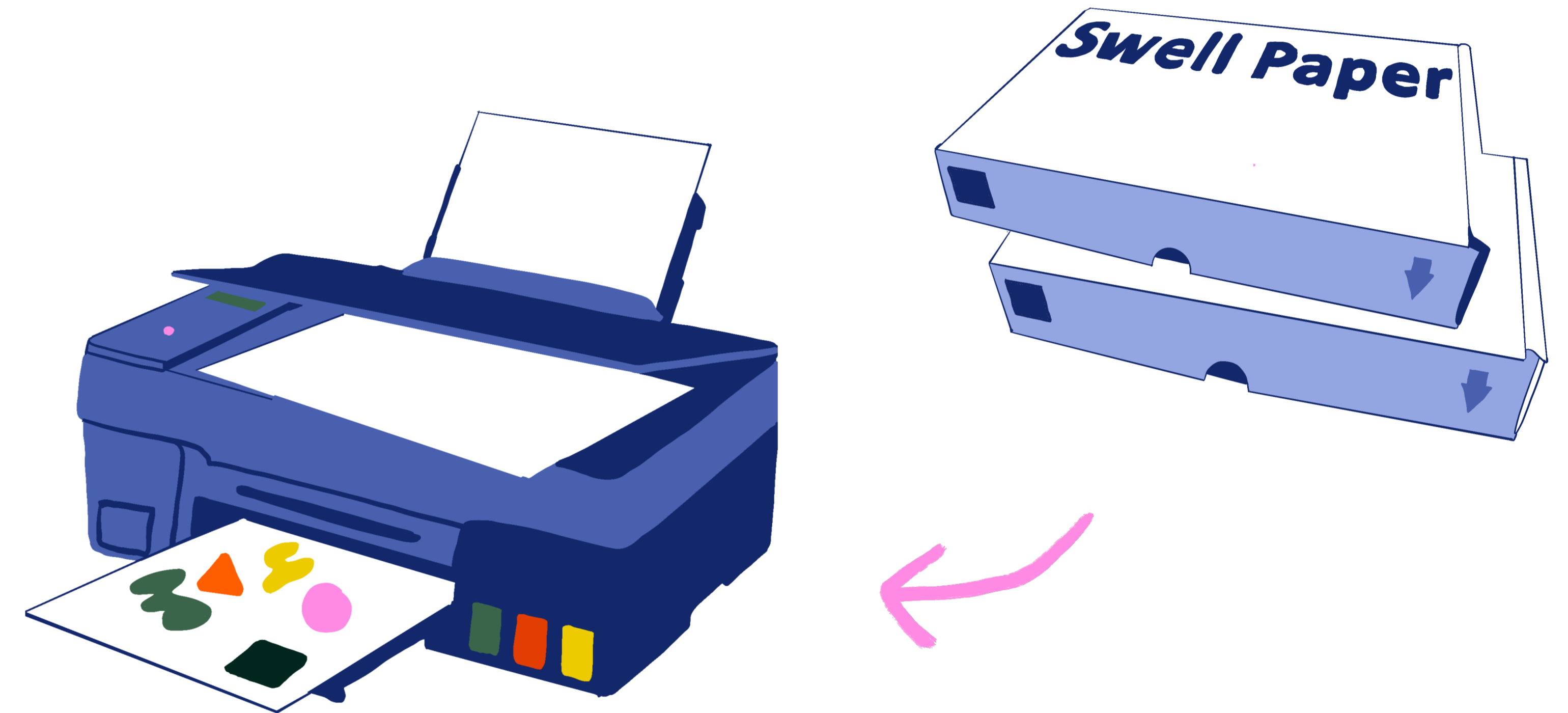


2. Plug the machine in and switch it on by pressing the red switch. Twist the numbered dial to 6 or 7 to raise the temperature of the heater



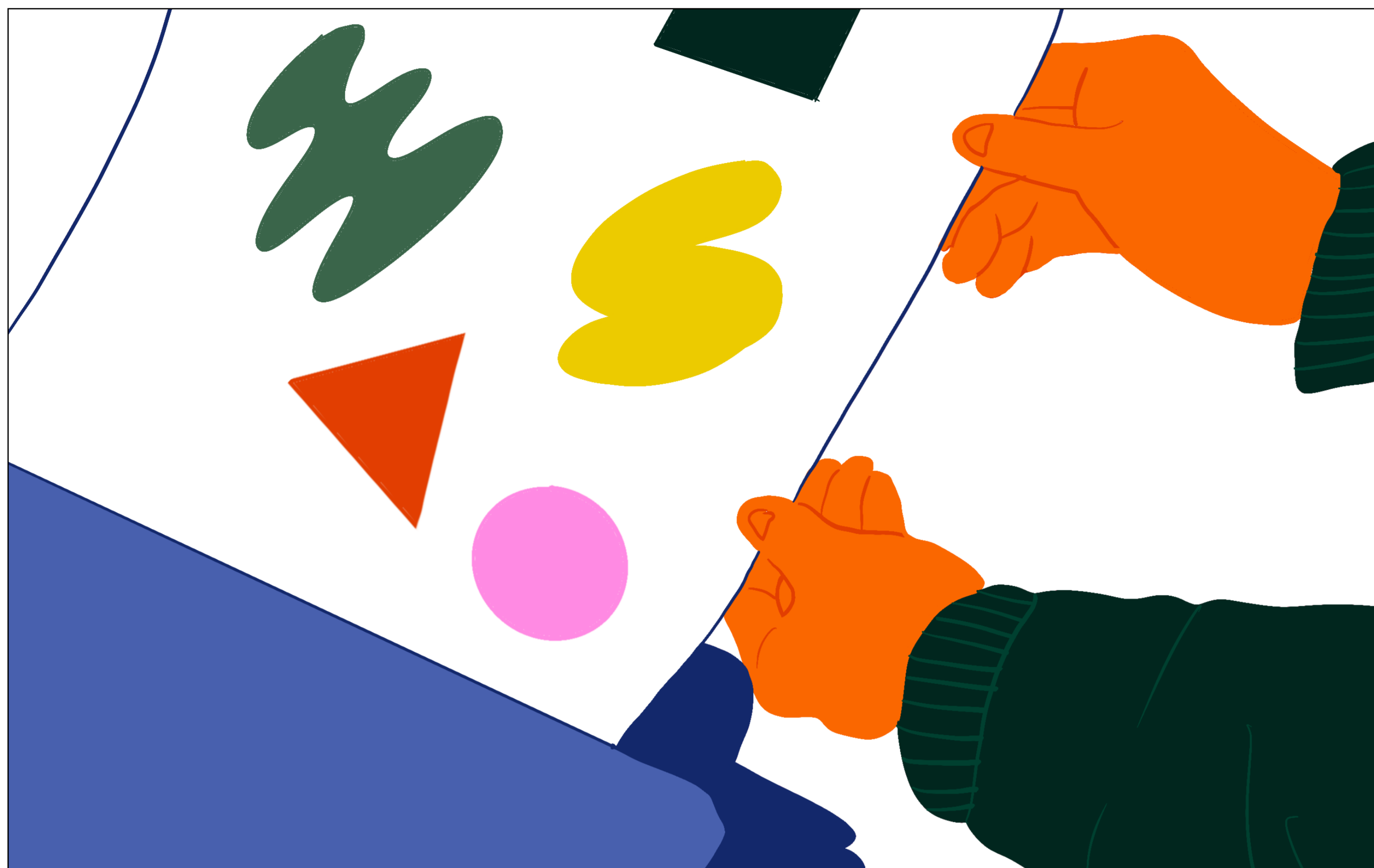
3. Whilst the machine is heating up, prepare your images. You can print out your images onto the swell paper using an inkjet printer.

Or you can use the pens provided to draw directly onto the paper.



4. Then feed your prepared image through the machine.

Treat the machine in the same way as you would use a laminator (feed in the paper slowly and don't force it through, let it travel through the machine at its own pace).



5. Please let the Access Lead know if there are less than 10 sheets left of the swell ink paper and they will replenish the stock

Here's a short video you can watch to see this in action:

<https://www.youtube.com/watch?v=LV3xZs2D5Ps>

Tips, Online Resources and Further Information

Some copyright free resources (primarily aimed for young people) are available in this online catalogue:

<http://www.tactilelibrary.com/>

For further information about the swell ink machine visit:

<https://zychemltd.com/swell-form-and-swell-touch-ordering/>

List of the products you can buy to use in the machine are here:

<https://www.zychem-ltd.co.uk/products>



About Turf

Founded in 2013 by Croydon locals, Turf Projects is Croydon's homegrown artist space and the first entirely artist-run contemporary art space in the borough.

A registered charity based in Croydon's Whitgift Shopping Centre, we put on free exhibitions, workshops, facilitate local artist collectives & run artist studios.

We try to make sure that everything we do is as accessible as possible to as many people as possible.

For more info or to get involved, visit turf-projects.com or email us at info@turf-projects.com



@turfprojects



@turfprojects